

Advanced Coil Repairs



Our state of the art coil repair facility ensures South African foundries have access to Inductotherm coil repairs at a lower cost and faster turnaround time.

As the Original Equipment Manufacturer (OEM), we:

- completely strip all the old insulation off the coil and sandblast the coil to bare copper to identify any problem areas.
- know what coil insulation your application originally called for and have access to it—including our patented coil insulation—to ensure you get the one right for you.
- repair and return the coil by bringing it back to today's standards.

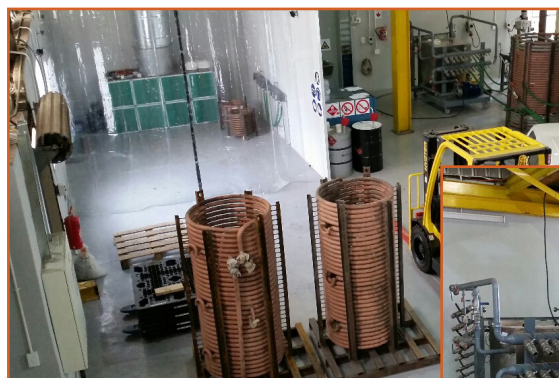
We are the *only* repair facility in South Africa using helium to leak check coils. While helium is an extra expense, it is proven to be the best way to accurately check for even the smallest coil leak since helium molecules are maller than water.

Any size leak can lead to a variety of problems, including:

- increased GLD reading due to wet refractory
- decreased refractory life due to improper sintering
- arcing from turn to turn



We take great pride in bringing your coil back to OEM standards.



Inductotherm and Cerefcio offer a state of the art coil repair facility



Avoiding these problems is crucial to minimize costly downtime and delays. That's why using the most accurate technology on the market today to prevent these situations is key.

Even if another repair company has already performed a coil repair, you can be assured that we can bring it back to today's standards.

Proper coil insulation and the technical expertise required to properly apply it is critical, as the wrong insulation could lead to shorter coil life, early coil failure and costly downtime.

Contact us today and learn how our worldwide team can help you.

www.cerefcio.co.za — www.inductotherm.com — www.inductothermgroup.com.

© 2017 Inductotherm Corp.
All Rights Reserved.

INDUCTOTHERM GROUP

Leading Manufacturers of Melting, Thermal Processing & Production Systems for the Metals & Materials Industry Worldwide.

Important: Appropriate Personal Protective Equipment (PPE) must be worn by anyone in proximity to molten metal.

